

Complete registration form and mail to:  
**NEMO AHEC, 115 North Rubey Street, Macon, MO 63552**  
 Fee is required with each registration. Attendance is limited to 30 students, so register early. A limited number of partial scholarships are available. Please contact NEMO AHEC for more information. We reserve the right to cancel a camp if enrollment is insufficient; fees will be refunded in the event that NEMO AHEC must make a cancellation. Please complete and mail today.

Please type or print legibly.

**June 15 for all camps to receive a free t-shirt and dog tag!**

Student Name: \_\_\_\_\_ Male or Female

Age: \_\_\_\_\_ Grade in the fall: \_\_\_\_\_ Birth Date: \_\_\_\_\_

Parent or Guardian: \_\_\_\_\_

Home Phone: \_\_\_\_\_ Work Phone: \_\_\_\_\_

Address: \_\_\_\_\_

Street City State Zip

Name of School: \_\_\_\_\_

School Address: \_\_\_\_\_

Street City State Zip

All camps are 8am—4pm daily. Please check the camp(s) you plan to attend:

\_\_\_\_\_ Adair County (Kirksville) July 7-9 \$40.00

\_\_\_\_\_ Linn County (Brookfield/Marceline) July 8-10 \$40.00

\_\_\_\_\_ Putnam/Sullivan County (Unionville/Milan) July 21—22 \$30.00

\_\_\_\_\_ Macon County (Macon) July 13—15 \$40.00

Please indicate your t-shirt size (circle one):

Youth: L

Adult: S M L XL XXL

Form may be photocopied for multiple registrations.

Have you ever wanted to be a....  
**Physician Radiology Tech Physical Therapist**  
**Nurse Dentist Pharmacist Dietician**  
 ...then you should come to the 2009

**Adair County**  
**M\*A\*S\*H Camp**  
**Missouri AHEC**  
**Science & Health Camp**

presented by the

**Northeast Missouri Area Health  
 Education Center, Inc.**  
 and Local Sponsors



**2009 Adair County M\*A\*S\*H Camp**

**Tuesday, July 7—Thursday, July 9, 2009**

**Daily Locations:  
 TBA**

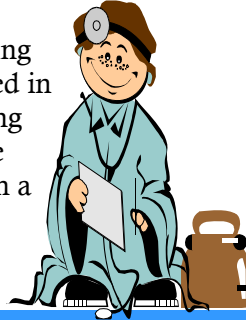
**Day Camp is from 8am—4pm Daily**

## General Information

Area healthcare providers and educators will combine their talents to present an impressive instructional program that will introduce students to the fascinating world of science. M\*A\*S\*H camp provides hands-on experiences for all attending.

## M\*A\*S\*H Goal

Goals for M\*A\*S\*H camps include: providing “hands-on” experiences to students interested in health care and science occupations; exposing students to a variety of careers in the science and health field; and providing students with a fun and interesting experience during the summer.



## Registration

- Cost of attending M\*A\*S\*H Camp per child:
- camps that are 2-days in length are \$30.00
  - camps that are 3-days in length are \$40.00.

This fee includes meals, snacks, t-shirt, dog tag and supplies.

Because of the hands-on experience at M\*A\*S\*H, enrollment is limited to the first 30 applicants.

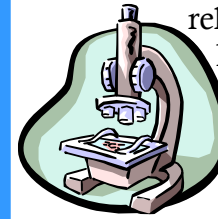
Register by June 15 to receive a free t-shirt and dog tag!

*Northeast Missouri Area Health Education Center (NEMO AHEC) is a regional center of the statewide Missouri AHEC system. The MAHEC achieves it's mission by Connecting Students to Careers, Providers to Communities, and Communities to Better Health.*

*Northeast Missouri AHEC is supported in part by agreements with the A. T. Still University of Health Sciences/ Kirksville College of Osteopathic Medicine via funds from the Bureau of Health Professions of the US Health Resources and Services Administration (HRSA) Cooperative Agreement #5-U77-HP03042-12-00, funds from the Missouri Department of Health and Senior Services (DHSS) contract #ERS 186-8006 Amendment 001, and through various fee-for-service contracts.*

## Who should attend?

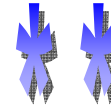
Any student who will enter 6th, 7th or 8th grade in the fall and wants to learn more about science and how it



relates to healthcare careers.

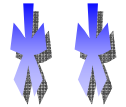
## Students will participate in...

- Chemistry/Biology Labs
- Scrub Labs
- Suture Labs
- Healthcare Career Activities
- Hospital Exploration
- Recreational Activities
- Much more!!!



*For more information contact:*

**NEMO AHEC**  
**(660) 385-6491**  
**1-877-303-2938**



## *2009 Adair County M\*A\*S\*H Camp Sponsors*

*Northeast Missouri Pediatrics*

*Northeast Regional Medical Center*

*Rider Drug*

*A. T. Still University*

*Truman State University*