

# TRUMAN

*A Weekly Publication for Students, Faculty, and Staff*



T O D A Y

Vol. 6, No. 34

June 10, 2002

## MARK YOUR CALENDARS



**18th North  
American Prairie  
Conference**  
June 23-27  
on Campus

**Heartland  
Chautauqua**  
July 1-6  
Kirksville's NEMO  
Fairgrounds

## North American Prairie Conference to be held June 23-27 on Truman Campus

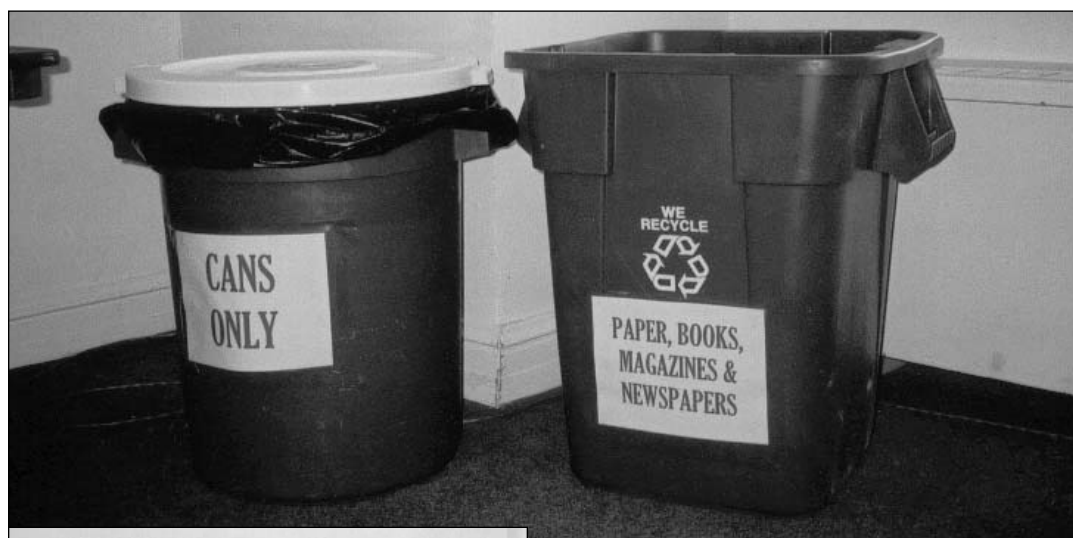
The City of Kirksville, Truman State University, the Chamber of Commerce and conference sponsors will be hosting the 18th North American Prairie Conference "Promoting Prairie" June 23-27 on the Truman campus.

This year's conference will focus on the following subthemes: restoration and reconstruction of prairie, prairie biodiversity and its importance to society, legislative and organizational initiatives to preserve prairie, prairie education and outreach, commercial ventures: backyard prairies and landscaping, and prairies as pollution control and environmental improvement.

The conference program includes concurrent sessions of oral and poster presentations, engaging workshops, a symposium on creating a native plant market, and a full day of unique and diverse field trips. Other events include a picnic at Thousand Hills State Park with a Native American Storyteller, a silent auction with all proceeds going to the Missouri Prairie Foundation, a luncheon and banquet, each with featured speakers.

For more information about the conference, please call 665.3766 or visit the Web site at <http://www.napc2002.org/>.

## Recycling Bins Added in Student Union Building



Recycling bins have been added to the main meeting rooms in the Student Union Building to help the University community recycle paper, books, magazines and newspapers in the building. For more information about campus recycling, contact Howard Worcester at 785.7672.

## Notables

**Melissa Passe, clinical supervision coordinator for the Speech and Hearing Clinic; Heather Brady, graduate student from St. Joseph, Mo.; and Jenny Garvin, junior communication disorders major from Manhattan, Kan.;** provided hearing screenings at the Children's First Health and

Safety Fair June 4.

**Joy Pugh, justice systems instructor,** is a criminalist at the Northeast Area Criminalistics Laboratory. She received her recertification as a Diplomate from the American Board of Criminalistics this spring.

## Notes

**There will be a Red Cross Blood Drive** from 11 a.m.-4 p.m., June 17, in the Student Union Building Activities Room.

**The Staff Development Committee will present the program "The Physical Plant and You"** from 9:30-11 a.m., June 20, in the

SUB Alumni Room. R.S.V.P. to Human Resources at 785.4031 by June 14.

**The Speech and Hearing Clinic is providing hearing evaluations** for the month of June from 10:30-11:20 a.m., Tuesday-Thursday. There is no cost to the public.

## Heartland Chautauqua to Perform at Kirksville's NEMO Fairgrounds July 1-6

The Heartland Chautauqua will bring a slice of history to Kirksville's NEMO Fairgrounds July 1-6. Five scholars will appear in full costume each evening and present historical characterizations. Each program is free to the public and will begin at 7 p.m. with 45 minutes of local entertainment.

Historical characterization is a format reminiscent of Hal Holbrook's Mark Twain or Steve Allen's television show, "Meeting of the Minds." Unlike scripted actors, the scholars speak spontaneously in the first-person and exchange ideas with audience members because of their knowledge of the character's history.

Personalities to be portrayed include Aimee Semple McPherson on July 2. McPherson was born in 1890 in rural Canada and was the founder of the International church of the Foursquare Gospel. She was the first woman to preach over the radio. During her young adult life she spent much of her time evangelizing throughout the United States. By the time her life ended in 1944, she had built and dedicated the 5,300 seat Angelus Temple in Los Angeles, built the L.I.F.E. Bible College, started her own radio station, KFSG, and instituted many welfare projects.

Willa Cather will be portrayed at Heartland Chautauqua on July 3. Cather was a writer who considered the pioneer

woman an artist in her own right. She moved to Nebraska when she was nine years old and wrote about the pioneer spirit and old traditions which shaped the America West. She began her career as a journalist and a teacher in Pittsburg and New York City. She is best known for her novels "O Pioneers!," "My Antonia" and "Death Comes for the Archbishop."

Other personalities to be portrayed will be Harry Reser on July 4, H.L. Mencken on July 5 and John Dos Passos on July 6. They will be discussed in the next issue of the Truman Today. Musical entertainment and other festivities will accompany the skits underneath the giant tent.

The Kirksville community will celebrate the arrival of the Heartland Chautauqua by meeting at the NEMO Fairgrounds on July 1 to share the task of raising the Chautauqua circus tent, a community activity that recalls a tradition established more than 100 years ago.

The Chautauqua Sojourners program will be at 12:15 p.m. on July 3. Members will eat before the program. Members of the University community are welcome to attend. The program is sponsored by Missouri Humanities Council.

For more information about the Heartland Chautauqua program, or to contribute a monetary donation, contact the Chamber of Commerce at 665.3766.

## On Campus

### 14 FRIDAY

1:30 p.m.-**Board of Governors Retreat, Thousand Hills Dining Lodge**

### 15 SATURDAY

9 a.m.-**Board of Governors Meeting, Thousand Hills Dining Lodge**

### 17 MONDAY

11a.m.-4 p.m.-**Red Cross Blood Drive, SUB Activities Room;** see Notes

### 20 THURSDAY

9:30-11 a.m.-**"The Physical Plant and You," SUB Alumni Room;** see Notes

**Summer  
Writing Center  
Hours**

**Monday - Thursday**  
12:30 to 4:30 p.m.

**Friday**  
9 a.m. until 1 p.m.

McClain Hall 303

*If you have any questions,  
contact the Writing Center  
at 785.4484.*

During the summer, the *Truman Today* is a biweekly publication. The next issue will be June 24. Deadline for entries is 5 p.m., the Wednesday preceding Monday's publication. Entries should be submitted by sending an e-mail to [ksvoboda@truman.edu](mailto:ksvoboda@truman.edu) or by completing a *Truman Today* form available in the Public Relations Office, McClain Hall 102. It may also be accessed online at <http://trumantoday.truman.edu/submissionform.pdf>.