

Truman *today*

A weekly newsletter for students, faculty and staff

Vol. 16 No. 20

February 7, 2012

TruAdventure Travel Program Heads to National Parks

Innovative ideas often emerge from the things we enjoy doing most. For Jennifer Hurst, professor of health and exercise science, that idea emerged from her love of America's national parks. This summer, Hurst will translate that love of parks into TruAdventure, a travel education program sponsored by the Truman Institute.

"I really enjoy the outdoors, but there's something extra special about our national parks," said Hurst, who has been on the faculty at Truman for six years. "Many people do not realize that America was the first nation to create the concept of a 'national park.' We have set aside these special places of beauty and recreation not just for some, but for all."

On campus, Hurst's passion for national parks has translated into courses and student excursions at Yellowstone, the Grant Tetons and the parks surrounding Moab, Utah – Arches and Canyonlands. In early 2011, Hurst approached Kevin Minch, Truman Institute director, about the idea of translating a popular student trip she co-lead with colleagues in the Health and Exercise Sciences Department, into an exciting program for adult learners.

"It seemed like a wonderful idea," Minch said. "What we liked most about it was that it had an appeal beyond students and alumni. It was something we thought anyone interested in wilderness and activity could get excited about."

The June 9-16, 2012, adventure begins when participants converge on Denver, Colo., for a Saturday night stay and Sunday morning departure by motor coach to Moab, Utah, where they spend two days and three nights visiting the sites surrounding Arches and Canyonlands national parks. On Wednesday, participants arrive in the Cortez, Colo., area where they explore the Anasazi Heritage Center, the

Lowry Pueblo Ruins, and the Howenweep National Monument. Thursday, the tour continues to the Ute Mountain Tribal Park before transitioning to Salida, Colo. Friday morning adventurers arrive in Buena Vista, Colo., for a refreshing whitewater rafting adventure on the Arkansas River. The journey concludes in Denver. Unlike traditional tours, however, the buses only get participants to the parks, the rest is on foot.

"This is an active vacation, which will involve hiking to learn and experience these parks and ruins in a hands-on fashion," Hurst said. "This trip is about more than just seeing great vistas and historic sites. It's also about well-being, activity, learning and greater self-awareness."

The trip will be of added interest to those who love geology and history. Arches National Park, known for its more than 2,000 natural sandstone arches, represents one of the most intriguing examples of the forces of nature at work on a landscape. Canyonlands, whose name only partially conveys its character, is home to impressive buttes, deep canyons and bizarre needle-like formations. At Anasazi Heritage Center, Howenweep National Monument and Ute Mountain Tribal Park, visitors step into the distant past and explore the dwellings of Puebloan culture much as they were hundreds of years ago.

For those who like a refreshing dip in the water, the trip is capped-off with an exhilarating whitewater ride down the Arkansas River.

"We like to think of this as a vacation that's 'a little off the beaten path,'" Minch said. "Our hope is that Dr. Hurst's work will blaze a trail for future educational travel programs through the University."

Participation in the program is limited to those aged 21 and over. All overnight

accommodations are in local hotels. Daytime meals are provided. The package cost of the program is \$1,500, double-occupancy, for those registering before March 1, 2012. Single-occupancy rates are available. For more information, participants can visit the program website at institute.truman.edu and select the TruAdventure link, or call 785.5406 to request a brochure.

SUMMER COURSE TAKES STUDENTS TO YELLOWSTONE AND GRAND TETONS NATIONAL PARKS

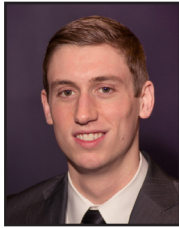
Jennifer Hurst, professor of health and exercise science, will host an informational meeting about this year's summer excursion course to Yellowstone and Grand Tetons national parks at 7 p.m. Feb. 7 in Pershing Building 3102.

Offered last summer for the first time, Physical Activity and the National Parks has been modified and expanded this summer to an eight-week hybrid course for summer 2012. A combination of online learning for the first five weeks and a longer 14-day excursion trip will give students an opportunity to learn and explore two of the most unique environments on earth. Students will learn about the national park system, as well as the unique biology, geology, history and conservation issues connected to both Yellowstone and Grand Tetons national parks through different physical activities. Through hiking, wildlife observation, whitewater rafting and one day of beginning rock-climbing instruction, students will get hands-on learning about the parks' fascinating features.

Questions may be directed to Hurst at jhurst@truman.edu or call 785.4464. Anyone is eligible to enroll in the course.

BUSHUR APPOINTED TO TRUMAN BOARD

Michael J. Bushur, a sophomore psychology and economics double major from Lee's Summit, Mo.,



Michael J. Bushur

was appointed as the student representative to the Truman Board of Governors by Gov. Jay Nixon Jan. 3. His appointment was confirmed by the Missouri Senate on Feb. 1.

Bushur is a member of Phi Sigma Pi Honor Fraternity, the University Conduct Board and the Funds Allotment Council.

NOMINATIONS SOUGHT FOR WILLIAM O'DONNELL LEE ADVISING AWARD

Truman students can nominate an outstanding full-time faculty advisor for the William O'Donnell Lee Advising Award.

To nominate a faculty member, complete the online nomination form at newstudents.truman.edu/web/form_builder2/form_builder.asp?testId=356.

Nominations are due by 5 p.m. April 8. Academic Advisors are not eligible for the award.

Contact Marty Eisenberg at martye@truman.edu with questions.

Register Now for University Conference

Registration is now open for the University Conference taking place Feb. 16. The day is devoted to the personal and professional growth and enrichment of all members of the Truman community, including students. Attendees will find a wide variety of topics including, but not limited to: navigating the hidden job market; strategies for studying smarter; how to build a strong team in student organizations; and quitting smoking.

Visit provost.truman.edu/University_Conference/conference_agenda.asp to register and view the complete schedule of sessions. To help facilitators prepare, it is required for interested attendees to register for each session they plan to attend.

Over the lunch hour, the new TruView prototype and new mobile computing applications will be unveiled. Those interested must register for lunch as well.

Truman Upgrades Emergency Notification System

Truman, in partnership with Rave Wireless, now offers an emergency email and text messaging service to students, faculty and staff.

This service will only be used in the event of an on-campus emergency, an unscheduled University closing or a delay or cancellation of classes due to, for example, severe inclement weather.

The new Rave Wireless system is an improvement over the previous Truman system with additional features and services. Rave supports more carriers and provides better email

options, as well as faster text messaging services.

Students, faculty and staff who are previously signed up for the Emergency Notification System are automatically transferred into the new system. Those not previously signed up may add the new service. There is no charge for signing up, but standard text messaging rates apply.

To sign up, log into TruView and enter/update emergency text messaging information on the "My Personal Information" channel.

Center for Student Involvement Accepting Leadership Recognition Program Nominations

Nominations for the Leadership Recognition Program are open now through March 14. The Center for Student Involvement is sponsoring this program to honor Truman students, advisors and organizations for their dedication to their peers, campus and Kirksville community through various leadership roles during the year. Nomination information can be obtained online at csi.truman.edu/lrp/. For more information on this event, contact the CSI by phone at 785.4222 or by email at csilrp@gmail.com.

Volunteer Fair

10 a.m.-12 p.m. Feb. 9 Student Union Building Hub

The Volunteer Fair, an effort to connect student volunteers and community agencies, will take place from 10 a.m.-12 p.m. Feb. 9 in the Student Union Building Hub. The fair, sponsored by the SERVE Center, the Career Center and SOAN 265, will be an opportunity for Truman students to learn more about the needs and services in the Kirksville area, and for community agencies to recruit volunteers to improve or enhance their service efforts.

Tru-Positions Helps Students Find Employment

Tru-Positions provides a comprehensive database of scholarship, institutional and work-study positions, including job descriptions and transferable work skills. This is an important advancement over the current process of requiring students to independently locate a student employment or service position. Tru-Positions will be updated as positions become available.

Tru-Positions can be found online at trupositions.truman.edu. Instructions for viewing and applying for a position can be found under the student information section. Any questions or feedback can be directed to Financial Aid at finaid@truman.edu.

Detours Calls for Photo Contest Submissions

Detours Magazine, Truman's student-produced travel magazine, will be hosting its biannual photo contest, themed "Show Your Spirit." The contest is free and open to all amateur photographers.

All entries must be submitted by Feb. 10 with location of the photo, the photographer's name and contact information and a short caption.

Two contest winners will be featured in the Summer 2012 issue; one selected by the magazine's editors and one by Detour Magazine's Facebook fans. There will also be at least four

honorable mentions.

Detours Magazine is a biannual travel magazine produced by Truman students. It focuses on the tri-state area of Missouri, Iowa and Illinois. In March 2010, the magazine received the Apple Award for best general interest magazine by the College Media Advisers.

To see the full rules and regulations, visit www.detourmagazine.com. Submit photos to photo@detourmagazine.com or mail to Detours Magazine, 100 E. Normal, Kirksville, MO 32501. The winners will be notified in February.

NOTABLES

Tom Capuano, professor of foreign language, published his edition and study of a 15th century Aragonese manuscript on arboriculture in *Mediaevistik: International Journal of Interdisciplinary Medieval Research*. His piece is titled "The Romance Translations of Geoffrey of Franconia's Pelzbuch."

Taner Edis, professor of physics, will present "Creation v. Evolution: The Muslim Debate"

Feb. 9 at Trinity University as part of that school's Darwin Week.

Marie Orton, professor of Italian, recently had two articles accepted for publication. "Telling Uneasiness: Second-generation Migrant Writers in Italy," came out in January in *Italian Cultural Studies* (University of Bristol) and "Writing the Nation" will be published in March in *Italian Culture*.

SCHOLARSHIP OPPORTUNITIES

Scholarships are available through **Federated Garden Clubs of Missouri, Inc.**, for the 2012-2013 academic year. Last year they awarded more than \$13,000 in scholarships. Two students selected by the Federated Garden Clubs of Missouri will be submitted to Central Region as an applicant and to National Gardens Club Inc., as a Missouri applicant and will compete for a Central Region and National Scholarship. The application is available at www.gardenclub.org/Youth/Scholarships.aspx. The deadline to apply is March 1.

The J. R. Popalisky Scholarship Fund of the Missouri Section of the American Water Works Association is now available. This \$1,000 scholarship is to encourage enrollment in educational studies related to career fields associated with water supply. Applications are available in the Financial Aid Office in McClain 103. Deadline for submission is March 21.

U.S. Bank is awarding 40 scholarships in the amount of \$1,000 through a random drawing process. Undergraduate students attending an eligible four-year college or university participating in the U.S. Bank Student Loan Program are eligible to apply. More information about this scholarship opportunity can be found at usbank.com/studentloans. Deadline to apply is March 31.

SellUsedBooks.com is currently accepting applications for their Spring 2012, 500-word essay, "Why I Deserve to Win this Scholarship" contest. More information may be found at www.sellusedbooks.com/sell-used-books-college-essay.htm. Deadline for the \$1,000 scholarship application is April 15.

The creators of the "Student Award Search Aid" website are offering a \$1,000 scholarship for 2012. To learn more, visit www.studentawardsearch.com/scholarships.htm. Deadline for application is May 28.

The BigSun Organization is offering a \$500 scholarship. All student-athletes are eligible for this award, regardless of sport. Deadline for submission is June 22. To learn how to apply, visit www.bigsunathletics.com.

The James "Rhio" O'Connor Memorial Scholarship Fund is offering its scholarship again this year to all college students. The scholarship awards are based on an essay contest with the subject concerning cancer. The scholarship amounts are \$5,000 for first place, \$2,000 for second place and \$1,000 for third place. Students can receive more information and request an application packet at www.cancermonthly.com/scholarship.asp.

ADMISSIONS TELECOUNSELOR

- Telecounselors call prospective students Monday through Thursday evenings to inform them about the Truman experience and answer questions about the admission process.
- Scholarship, institutional, volunteer and work-study positions are available for the 2012-2013 school year.
- Applications are available online at telecounseling.truman.edu, by emailing a request to Kara Humphrey at karah@truman.edu or by picking up a paper copy at the front desk in the Office of Admission (Ruth W. Towne Museum & Visitors Center on the corner of Franklin St. and Normal Ave.).
- Applications are due at 5 p.m. Feb. 24.

Student Ambassador Applications

Student Ambassador applications are now available at ambassadors.truman.edu.

Applications are due Feb. 17.

Contact Jacob Funke at funke@truman.edu with any questions.

2012 Summer Orientation Dates

June
4 · 7 · 11 · 14 ·
18 · 22 · 26 · 29

August
17

NOTES

Truman's Art of Living Club will once again offer the Art of Living course Feb. 10-Feb. 13. Anyone interested may attend an informational meeting at 7 p.m. Feb. 7 or Feb. 8 in Baldwin 349. Contact Lloyd Pflueger at lloyd@truman.edu with questions.

The Spring Career Expo will be 12-4 p.m. Feb. 8 in the Student Union Building. This is part of Career Week, sponsored by the Career Center.

A Peace Corps information session will take place at 7:15 p.m. Feb. 8 in the Student Union Building Georgian Room A.

Truman will be conducting a public auction of surplus equipment and furniture at 9 a.m. Feb. 11 at the Dulaney-Baldwin Building.

The Habitat for Humanity Dodgeball Tournament will take place from 6-9 p.m. Feb. 12 in the Pershing Small Gym.

"Brighton Beach Memoirs" will run at 8 p.m. Feb. 15-18 in the James G. Severns Theatre.

The Student Research Conference abstract deadline is Feb. 17. All abstracts can be submitted online at src.truman.edu.

The observatory will host an open house from 7-9 p.m. Feb. 21 at the University Farm.

Registration for the Big Event is open now through March 2. The Big Event will take place March 17. Register online at serve.truman.edu/bigevent.

Truman Foundation Scholarships Open

Truman State University Foundation Scholarship applications are now available. Approximately \$250,000 is being advertised and will be awarded to current Truman students for the 2012-2013 academic year.

Applications are available online and are due by midnight March 14. To learn more, go to truman.edu and click on Student Life / Money / Foundation Scholarships or visit secure.truman.edu/isupport-s/.

Pickler Memorial Library

U.S. President exhibit comes to Truman

An exhibit featuring the 44 presidents of the United States is currently on display in the Library Gallery. The exhibit includes Lincoln items that are part of the Lincoln Schwengel Collection and past winners of the annual Lincoln contest. The display will be available until the end of February.

On-Campus Athletics

Wrestling vs. Fort Hays State University
Feb. 12
1 p.m.

Wrestling vs. University of Central Missouri
Feb. 12
3 p.m.

Wrestling vs. Lindenwood University
Feb. 12
5 p.m.

Men's Basketball vs. Hannibal-LaGrange College
Feb. 13
7 p.m.



SPRING 2012 GLOBAL ISSUES COLLOQUIUM

"Is Israeli-Palestinian Peace Still Possible?"
7 p.m. • Feb. 8
Violette Hall 1000

Gershon Baskin, founder and chair of the Israel Palestine Center for Research and Information
Co-Sponsors: School of Social and Cultural Studies; History Department; Hillel; Students for a Middle East Peace

"Y Ahora Aquí en el Norte" ("And Now Here in the North")
7 p.m. • Feb. 23
Violette Hall 1000

Axel Fuentes, field organizer, Center for New Community

"Unworking Asia: The Demise of Hand Painted Political Graphics in the Digital Age"
7 p.m. • April 5
Student Union Building Activities Room
Aaron Fine, professor of art and gallery director

VOLUNTEER INCOME TAX ASSISTANCE BY BETA ALPHA PSI

BETA ALPHA PSI IS SPONSORING VOLUNTEER INCOME TAX ASSISTANCE, A FREE TAX RETURN PREPARATION AND ELECTRONIC FILING PROGRAM.

ASSISTANCE WILL BE AVAILABLE:

FEBRUARY
11 • 18 • 25

MARCH
24 • 31

8 A.M. - 3 P.M.
VIOLETTE HALL 1424

THOSE COMING MUST BRING A SOCIAL SECURITY CARD, WAGE STATEMENTS (SUCH AS A W-2 OR 1099), A COPY OF LAST YEAR'S FEDERAL AND STATE TAX RETURN, AND BANK ROUTING AND ACCOUNT NUMBERS FOR DIRECT DEPOSIT.

2012-2013 Showcase Dates

September 22, 2012

November 3, 2012

January 26, 2013

March 23, 2013

April 20, 2013

Recycling Reminder

Truman Recycling currently accepts:

- Number 1 and 2 plastic (usually bottles and Hy-Vee plastic bags, no Walmart bags)
- Aluminum cans
- Tin cans
- Paper (must be in appropriate bin)

They do not accept:

- All other forms of plastic
- Glass

All containers should be emptied and washed out.

